

Let's

Let's study Japanese language

NIKKEN

Japanese
Language
Department

enjoy!



STUDY

Largest in Japan

Size of
Nikken Group

Economic Support

Free Dorm
During Course Period

College Instruction
Original
Learning Material



UTSUNOMIYA

NIKKEN INSTITUTE OF TECHNOLOGY



Join us!



Utsunomiya Nikken has a Japanese language Depart for foreign students offers Japanese language course to all who wants to study Japanese language in Japan. Utsunomiya Nikken fully supports your student life to get study happily and safely.

Hello



<College chair-man's opinion>
 Utsunomiya Nikken's Japanese language Depart Japanese language course to all who wants to study Japanese language in Japan. Numerous students along with Japanese are staying in the same college building so that each can get widen an opportunity to interact, stimulate in Japanese language learning.
 We wish you to get learn here, Japanese culture, manner, etc. As giving you all an economical support for living here, we give you free hostel.
 Chair man Itou Noboru

日本語を学ぶ
 留学生の入学式
 宇都宮日建工科専門
 学校(宇都宮市築瀬4
 丁目)は5日、日本語
 学科10月生の入学式を
 行った。入学者の出身
 国は香港、台湾、ベト
 ナム、モンゴル、ネパ
 ールといった国際色豊
 かな5国。式では伊藤
 登理事長が「最後まで
 留学目的を見失わない
 ように」とあいさつを
 し、香港出身のチャン
 ・ジー・マンさんが10
 月生の代表として答辞
 を述べた。写真。
 留学生が対象の同学
 科は語学のほか独自の

Shimotsuke Newspaper 5.Oct. 2017 Published

Point 1

Largest in Japan! Size of Nikken Group

Nikken group has 108 colleges (1,160 class) over in Japan from Hokkaido to Okinawa. Nikken Group is known for the highest achievement in Class 1 Architect. It belongs to Nikken Academy, Engineering Institute. It is the largest group of contribution and the promotion of industrial, technical fields.

Nikken Group

Nikken Academy
(108 branch all over Japan)

Constructional Association
Employment Agency
Temporary workers
Division

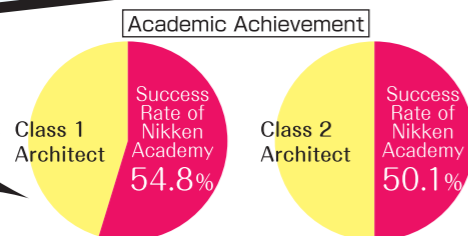
Nikken Institute of Technology
(Comprised of 7 Campuses)

Utsunomiya
Nikken Institute of Technology

Teaching
Material
Development
Division

Publication
Division

Success Rate
Position
No.1!



1 in 2
qualifiers belongs
to the Nikken Group
in Japan

※Our Academic result of Class 1 Architect / Class 2 Architect over the past decade(1999-2008)



We fully support foreign students!

Japan International
Education Association (NPO)

Point 2

Part 1

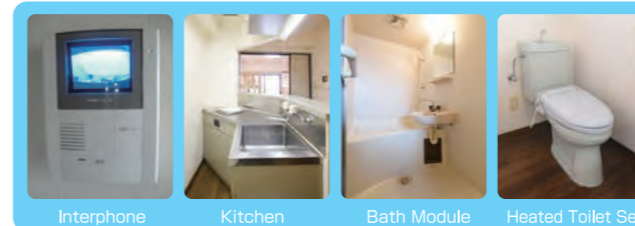
Free Dormitory During Course Period! Sufficient Economic Support!

Giving a quite concern in economic condition of the students. Utsunomiya Nikken engineering college provides free dorms during course period.



Dormitory

Dorm is on the Upper Level of the Classroom. Each Room is Equipped with Air conditioner, Free Wi-Fi, Kitchen, Bath Module, Heated Toilet Seat ! Feel safe that there's also Interphone. ※Students must buy their own electronic appliances and furniture.



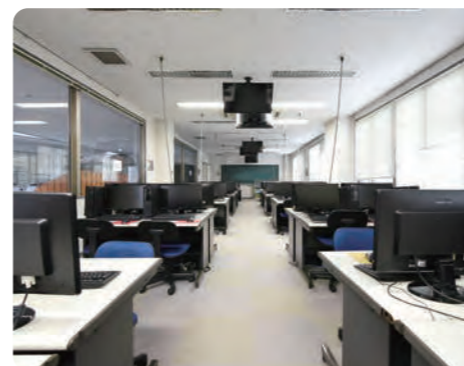
Community Room

Student can enjoy Community room for self study, discussion space. Community room is 24hour opened and always having fun with cultural exchanges and the party, etc.



Other equipments

College room has also computers, student hall and other equipments.



Affordable Tuition!

Sufficient Economic Support!

1 Year Course/ April Admission

Total Fee **¥750,000**

One-time payment

※Installment Plan Accepted. ※We give Priority to the applicant of one-time payment.

Pay by Installments

Admission Before

¥600,000

※The applicant must pay this amount of money admission.
¥100,000(Admission Fee) ¥400,000(Tuition) ¥100,000(Equipment Cost)

+

After Admission

¥150,000

※Students can pay their expense by part-time-job.
¥30,000×5times (June - October)

[Differences from Other schools] Total Fee + Dormitory Fee

	Tokyo/Japanese School	Utsunomiya/Japanese school	Our College
①Total Fee	¥750,000	¥680,000	¥750,000
②Dormitory Fee	<Apartment> ¥40,000 /month ¥480,000 /year	<Dormitory> ¥29,000 /month ¥348,000 /year	<Dormitory> While at School ¥0
Actually needed Cost ①+②	¥1,230,000	¥1,028,000	¥750,000



2 Years Course/ April Admission

Total Fee **¥1,500,000**

One-time payment

※Installment Plan Accepted. ※We give Priority to the applicant of one-time payment.

Pay by Installments

Admission Before

¥1,000,000

※The applicant must pay this amount of money admission.
¥100,000(Admission Fee) ¥800,000(Tuition) ¥100,000(Equipment Cost)

+

After Admission

¥500,000

※Students can pay their expense by part-time-job.
¥30,000×16times (June -)+ ¥20,000

[Differences from Other schools] Total Fee + Dormitory Fee

	Tokyo/Japanese School	Utsunomiya/Japanese school	Our College
①Total Fee	¥1,420,000	¥1,240,000	¥1,500,000
②Dormitory Fee	<Apartment> ¥40,000 /month ¥960,000 /2 years	<Dormitory> ¥29,000 /month ¥696,000 /2 years	<Dormitory> While at School ¥0
Actually needed Cost ①+②	¥2,380,000	¥1,936,000	¥1,500,000



Point 2
Part 3

Affordable Tuition!

1 Year and 6 Months Course/October Admission

Total Fee **¥1,100,000**

One-time payment

※Installment Plan Accepted. ※We give Priority to the applicant of one-time payment.

Pay by Installments

Admission Before

¥800,000

※The applicant must pay this amount of money admission.
¥100,000(Admission Fee) ¥550,000(Tuition) ¥150,000(Equipment Cost)

+

After Admission

¥300,000

※Students can pay their expense by part-time-job.
¥30,000×10times (December - September)

[Differences from Other schools] Total Fee + Dormitory Fee

	Tokyo/Japanese School	Utsunomiya/Japanese school	Our College
①Total Fee	¥1,050,000	¥918,500	¥1,100,000
②Dormitory Fee	<Apartment> ¥40,000/month ¥720,000/1 Year and 6 Months	<Dormitory> ¥29,000/month ¥522,000/1 Year and 6 Months	<Dormitory> While at School ¥0
Actually needed Cost ①+②	¥1,770,000	¥1,440,500	¥1,100,000



Fulfilling part-time job!

Possibility of part-time work with in mentioned work hour.



We are balancing both study and part-time work.



We offer guidance for resumes and interviews, relieving students of that pressure.

enjoy!

Point 3

Nikken Original Learning Material

Our professional and skilled instructors will teach you essential information, words, and tips for daily life in Japan. To make feel you interesting in study is our purpose of teaching. Classes are focused on all levels of the Japanese language Proficiency Test (JLPT). We emphasize speaking and listening, training our students to be effective communicators from the start.

No other colleges have such classroom progress

Curriculum

We look for the individual capacity of ones and direct also for the practical aspect of life. Strategic programs for Ones bright future.

Easily and happy learning!



Learning Stages	Attained Level	Learning Stages	Attained Level
Beginner Level	The target is to understand easy Japanese written in basic vocabulary and kanji(Chinese characters), aquire the speaking skill in the daily life and the writing skill about some simple topics. The students will prepare for taking entrance tests for the vocational school etc.	Intermediate Level	The target is to understand Japanese expression, grammer, kanji, vocabulary used in daily life, make various kinds of stages to speak Japanese in an almost natural speed. The students will prepare for taking entrance tests for the colleages etc.
Pre-advanced Level	The target is to understand natural Japanese expression, grammer, kanji, vocabulary, foster skills to write Japanese compositions and simple essays.The students will prepare for taking entrance tests for the colleages and universities.	Advanced Level	The target is to master advanced Japanese grammer, kanji, vocabulary, aquire general communication abilities necessary in social Japanese lives, understand Japanese used in various kind of lives.The students will prepare for taking entrance tests for the colleages and universities.

Perfect Guidance to Pass JLPT TEST!

Japanese Language Proficiency Test (JLPT) Suitable for Each Level

- We thoroughly analyze the newest exam questions to offer courses with original examination preparation that is easy to learn.
- We counsel our students when they are having difficulty in understanding, lacking confidence in test-taking, or experiencing any other personal difficulties.
- We give instruction for effective self-study.
- We provide trial exams too, for helping students to develop their own test-taking strategies, allot time effectively, and deal with nervousness.

Acutal Result		
★	N1	5
★	N2	14
★	N3	22



Classes are good! Learnig is fun!!!



Foreign students computer room

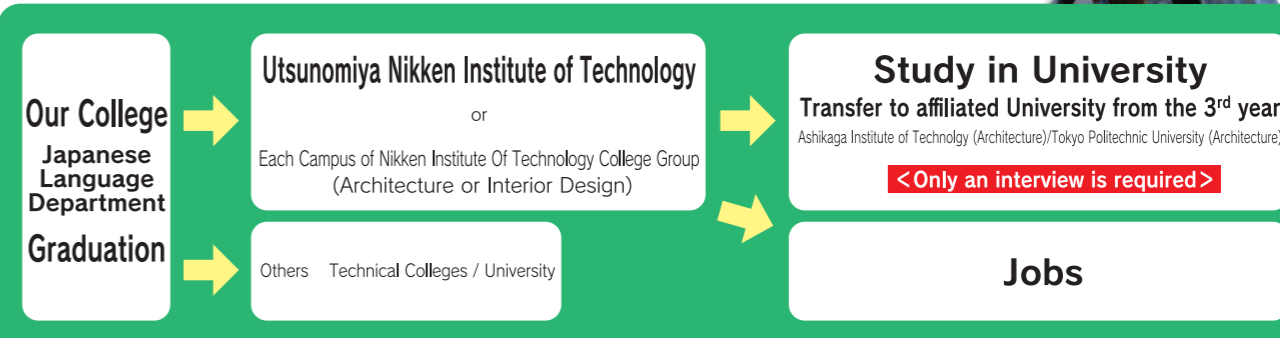


Nikken own Easy-to-follow Original Learning Material Ippatsukun!

Computers with built-in original learning software developed by Nikken Group.Students looking to enter university can also study math and English, learning Japanese on their own outside of class.

Courses After Graduation

Great!



University	College	Others
Meiji Univ. Daitobunka Univ. Toyo Univ. Sakushingakuin Univ. Tokyo Welfare Univ. Etc	Tokyo Nikken Koka College Tokyo Animation College International Technical College TBC College Etc	S-Pool,Inc. YUKOU Construction Co. Ltd Keisyoken Noodle Shop Nitto Co. Ltd Etc



From Entry in Japan Until the Entrance Ceremony

Arrival

No need to worry—our staff will be waiting for you at the airport.



To the Narita Airport Pick-up by Bus



Pleasant talk



After reaching college, have a meal with doing pleasant talk.

Orientation

We explain rules for living in Utsunomiya and the dorm.



We do invite the local police to give the Traffic Safety class.

Utsunomiya City Tour · Procedures for new life

Teachers and students guide new students guide around Utsunomiya City and support various kinds of procedures to start their new lives.



Entrance Ceremony Welcome Party



Live a fulfilling student life here!

Utsunomiya – The Best Place to Live

Tochigi's famous place famous product

World Heritage · Nikko Toshogu



Utsunomiya GYOZA, cocktail



Tochigi Prefecture Professional Sports Teams

Tochigi SC



Nikko Ice BUCKS



Tochigi Brev



Utsunomiya Blitzen



Le Beausset Motorsports



Utsunomiya is the largest city in the northern Kanto region just 100 km or 40 minutes outside of Tokyo by the Tohoku Shinkansen. The prefectural office of Tochigi Prefecture is also located in Utsunomiya, and major auto companies like Honda and Nissan are expanding their businesses to the area. Utsunomiya is not only known for its industrial development, but also for its national rice production.

Among the nearly 500,000 residents of Utsunomiya, approximately 5700 are foreign nationals. Nowadays Utsunomiya is famous nationwide for its pot stickers, and there are nearly 200 specialty restaurants in the city. Other famous resorts and tourist spots such as Nikko and Nasu-Kogen are located nearby. Among them, the Nikko Toshogu is listed as a World Heritage Site and is famous for its international tourism.

Only 8 minutes from Utsunomiya Station on foot



There are many supermarkets, etc near the college. Many students make use of the 100 yen shops and discount stores.

Yearly Schedule and Events

※Contents may differ through year.

There are many extra-curricular activities, College Excursion twice in a year (Tokyo Disneyland, Edo Wonderland, Tokyo visit, etc., it depends on that year). Sports Event holds twice in a year. It is also possible to experience traditional Japanese culture like tea-ceremony, cherry blossom viewing, festivals and many more for first-hand. Since the Japanese and international students jointly participate in Sports Event, there is ample opportunity for international exchange.



4

- Entrance Ceremony for April Students
- Viewing Cherry-Blossoms



5

- Spring Sports Festival



6

- Studying toward JLPT Test



7

- JLPT Test(N1,N2,N3)
- Guidance Meeting 1
- Tanabata (Summer Kimono Day)
- School Trip(Nikko Edo Village)



8

- Summer Holidays
- Miya Festival



9

- Guidance Meeting 2



10

- Entrance Ceremony for October Students



11

- Autumn Sports Festival
- Studying toward JLPT Test



12

- JLPT Test(N1,N2,N3)
- School Trip(Tokyo Disney resort)



1

- Japanese Culture Day (Tea Ceremony/Calligraphy)



2

- Throw beans Festival(Setsubun)
- Japanese Speech Contest



3

- Graduation Ceremony



Japanese Culture & Interacting with Japanese People

Japanese Culture

In order to let our students have more meaningful experiences in Japan, we offer them opportunities to experience cultural activities such as tea ceremonies. We take pride in showing them our Japanese courtesy in their daily lives.



Interacting with Japanese People

The campus is shared with the Japanese students, so there are plenty of opportunities to make Japanese friends at on-campus events.



How you feel about yearly Events?

I attended the Japanese Speech Contest At last I got the Grand Prize this year. This is a nice experience for me. Would you try that in Japan? Teachers and friends will help you. You will be able to enjoy Japanese life here in Utsunomiya. I Love Japan



Really very excited to see Cherry Blossom! Cherry Blossom has a kind of smell!!! Happy to wear yukata in summer!! While making Japanese tea, It felt difficult to sit on heel, but it was a good experience of Japanese culture.

I Love JP!



A competition with Japanese students in sports day was a joyous moment. There are many opportunities to interact with Japanese students.



We met with Ninja! Experience of being Ninja was amazing!!

Teachers are very kind. They always talk to us and help us. You can consult with them about your future, your problems, etc. Thanks to the kind teacher, I passed N1 Level Test of JLPT and the Entrance Exam of Meiji Univ.

Challenge



We got a chance to meet Mickey Mouse in Disney land. We also went Cinderella castle.

Happy



I'm really happy to choose this school. I was able to make a lot of friends here at school. First I came to Japan, I didn't understand even Hiragana, Japanese alphabet. I decided to study Japanese at that time. Since then I have learned it very hard. Now I got the certificate of N1, JLPT Test. I appreciate our teachers and Japanese friends.





Point 1

Largest in Japan

**Size of
Nikken Group**

Point 2

Economic Support

Free Dorm
During Course Period

Point 3

College Instruction

**Original
Learning Material**



UTSUNOMIYA NIKKEN INSTITUTE OF TECHNOLOGY

<http://www.utsunomiyanikken.com/>

Yanaze 4-3-13, Utsunomiya City, Tochigi 321-0934
TEL +81-28-639-0510 E-mail utsunomiya.nk@nikken.ac.jp